

LOGGIA

SAINT-LAMBERT

200, Rue Saint-Georges

101

4 1/2

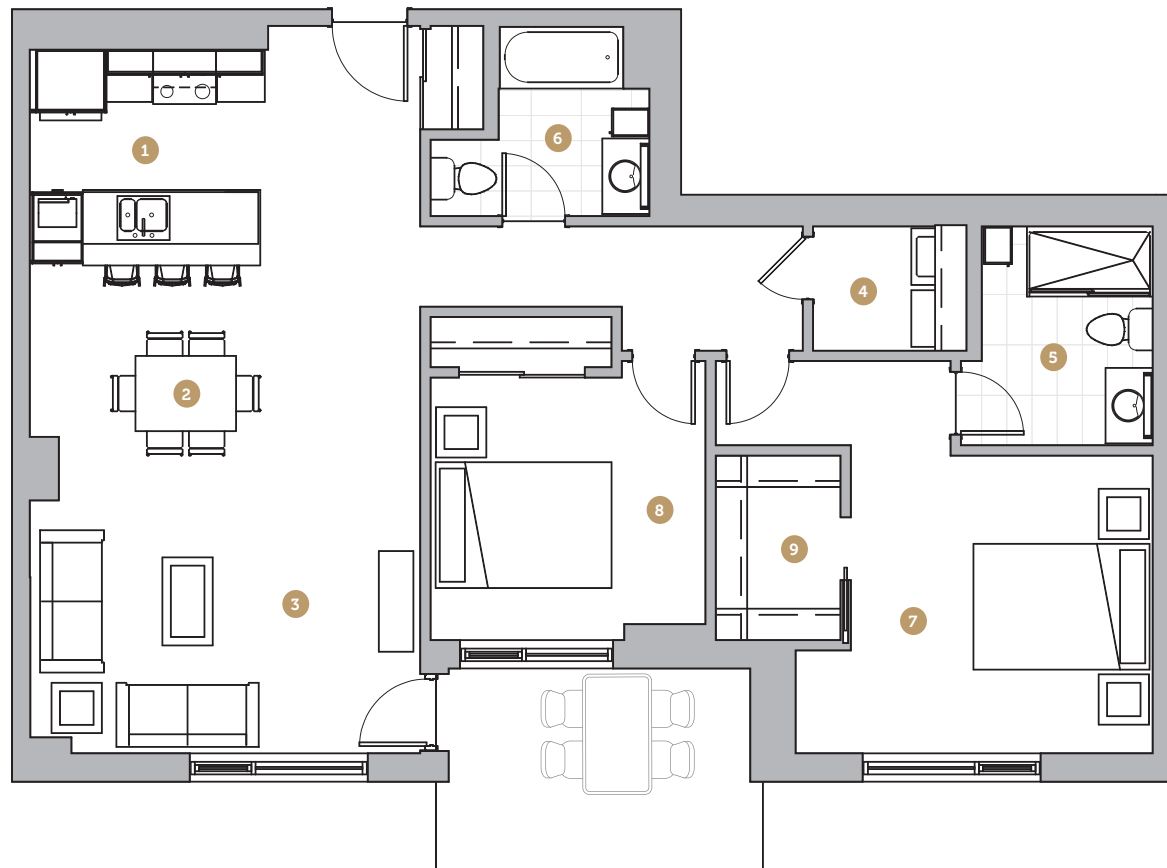
Superficie 1 179 pi²
Superficie balcon 99 pi²
Superficie totale 1 278 pi²

- 1 Cuisine 9' 4" x 8' 7"
- 2 Salle à manger 15' 6" x 9' 1"
- 3 Salon 15' 6" x 10' 4"
- 4 Salle de lavage 6' 1" x 4' 11"
- 5 Salle de bain 1 6' 10" x 8' 9"
- 6 Salle de bain 2 8' 9" x 7' 6"
- 7 Chambre 1 12' 0" x 11' 10"
- 8 Chambre 2 10' 11" x 10' 5"
- 9 Walk-in 5' 0" x 7' 4"

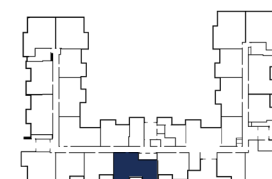
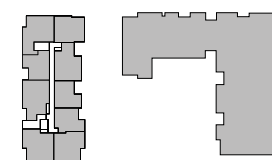
Loyer

Stationnement

Rangement



Avenue Saint-Charles



Rue Saint-Georges

NOTES