

LOGGIA

SAINT-LAMBERT

200, Rue Saint-Georges

106

4 1/2

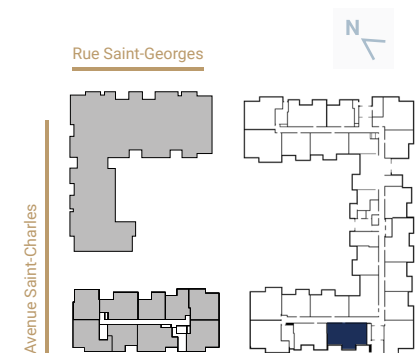
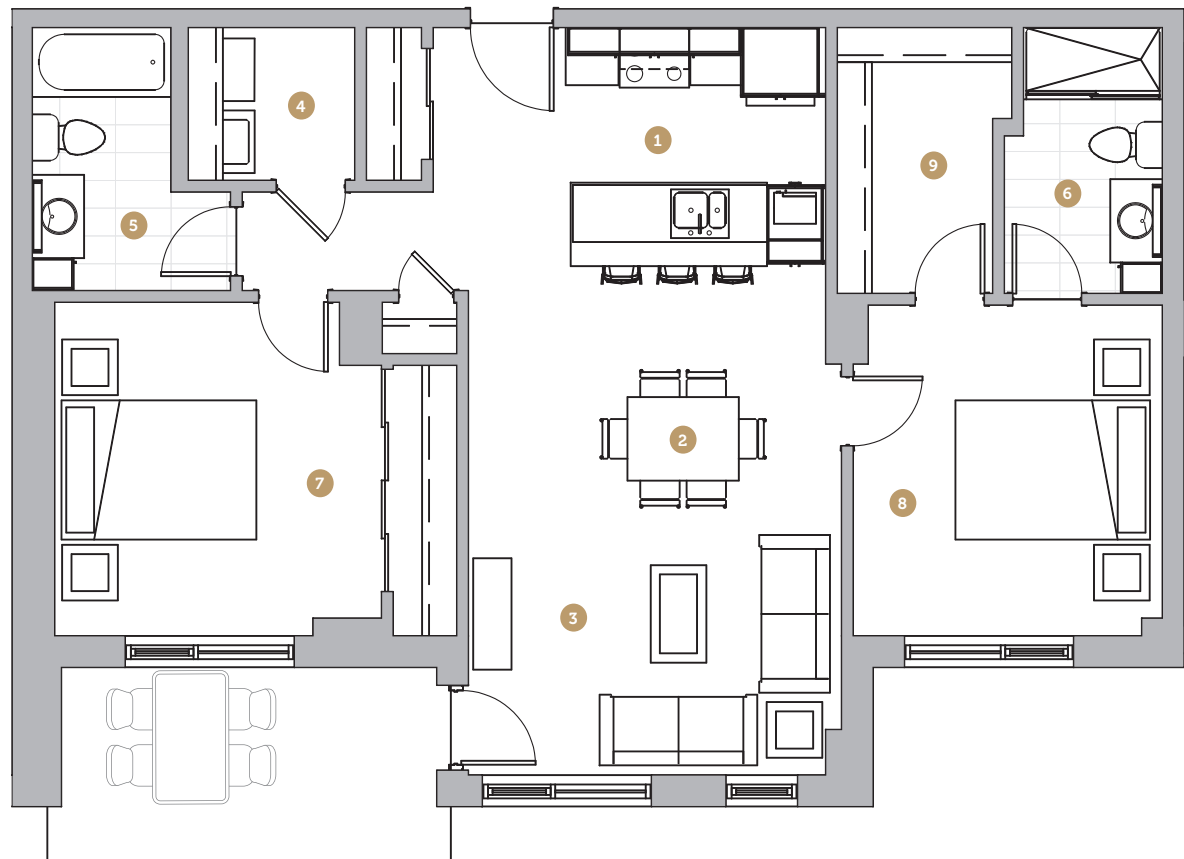
Superficie 1 035 pi²
Superficie balcon 95 pi²
Superficie totale 1 130 pi²

- 1 Cuisine 9' 4" x 8' 7"
- 2 Salle à manger 13' 5" x 9' 5"
- 3 Salon 13' 5" x 8' 10"
- 4 Salle de lavage 6' 0" x 5' 6"
- 5 Salle de bain 1 5' 0" x 9' 6"
- 6 Salle de bain 2 5' 8" x 9' 7"
- 7 Chambre 1 11' 9" x 12' 0"
- 8 Chambre 2 11' 1" x 11' 11"
- 9 Walk-in 5' 7" x 9' 7"

Loyer

Stationnement

Rangement



NOTES