

LOGGIA

SAINT-LAMBERT

200, Rue Saint-Georges

121

4 1/2

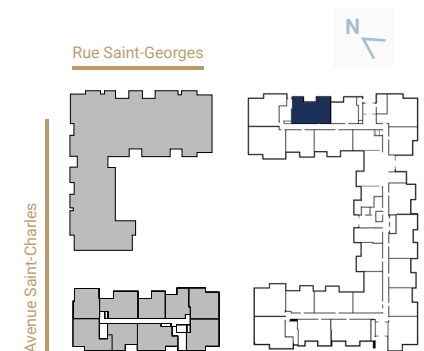
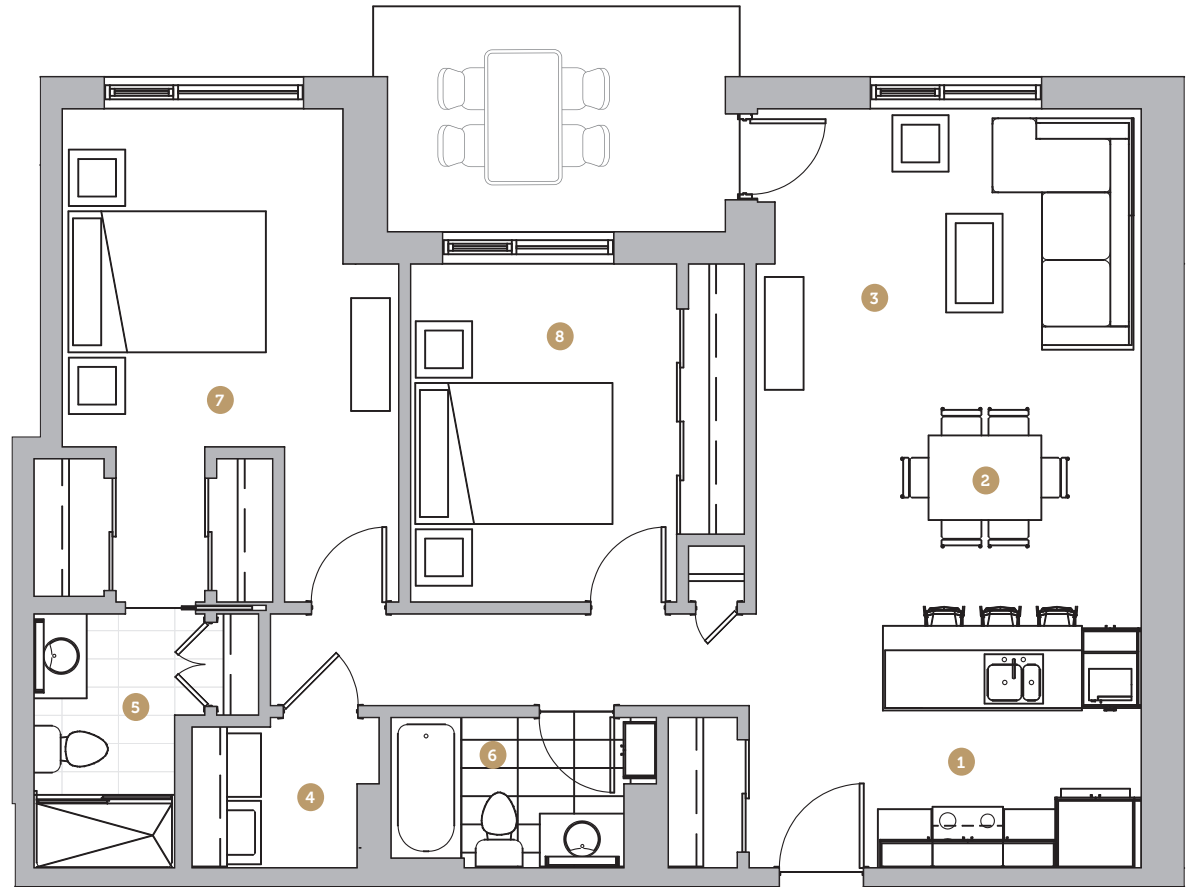
Superficie 1 076 pi²
Superficie balcon 98 pi²
Superficie totale 1 174 pi²

- 1 Cuisine 9' 4" x 8' 7"
- 2 Salle à manger 13' 8" x 8' 2"
- 3 Salon 13' 8" x 10' 2"
- 4 Salle de lavage 5' 10" x 5' 0"
- 5 Salle de bain 1 5' 0" x 9' 0"
- 6 Salle de bain 2 8' 3" x 5' 4"
- 7 Chambre 1 11' 11" (10' 0") x 12' 0"
- 8 Chambre 2 9' 5" x 12' 0"

Loyer

Stationnement

Rangement



NOTES