

LOGGIA

SAINT-LAMBERT

200, Rue Saint-Georges

123

4 1/2

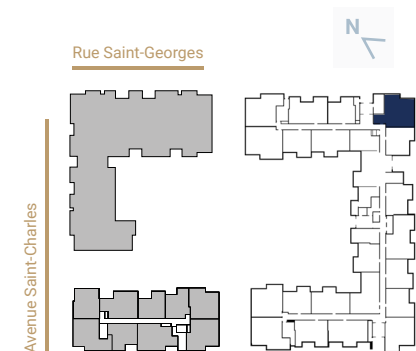
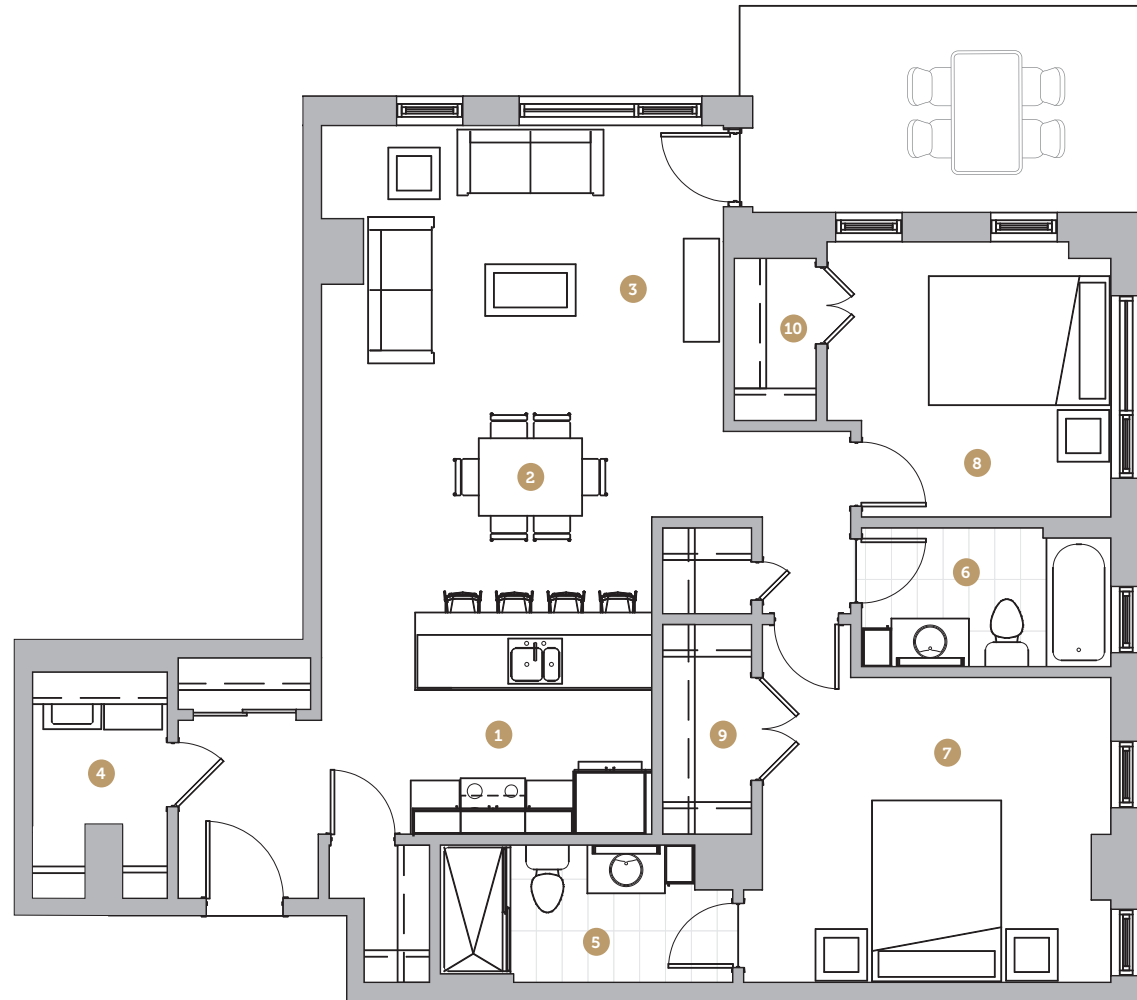
Superficie 1 150 pi²
Superficie balcon 122 pi²
Superficie totale 1 272 pi²

- 1 Cuisine 9' 4" x 8' 7"
- 2 Salle à manger 12' 10" x 8' 11"
- 3 Salon 15' 7" x 9' 11"
- 4 Salle de lavage 5' 3" x 5' 11"
- 5 Salle de bain 1 11' 4" x 5' 4"
- 6 Salle de bain 2 9' 8" x 5' 5"
- 7 Chambre 1 13' 6" x 11' 10"
- 8 Chambre 2 11' 0" x 10' 8"
- 9 Walk-in 3' 5" x 8' 2"
- 10 Walk-in 3' 2" x 6' 4"

Loyer

Stationnement

Rangement



NOTES