

LOGGIA

SAINT-LAMBERT

200, Rue Saint-Georges

202

3 1/2

Superficie	806 pi ²
Superficie balcon	102 pi ²
Superficie totale	908 pi ²

- 1 Cuisine
9' 4" x 8' 7"
- 2 Salle à manger
14' 9" x 9' 1"
- 3 Salon
14' 9" x 9' 9"
- 4 Salle de lavage
6' 7" x 5' 8"
- 5 Salle de bain
5' 0" x 9' 8"
- 6 Chambre
11' 9" x 11' 10"

Loyer

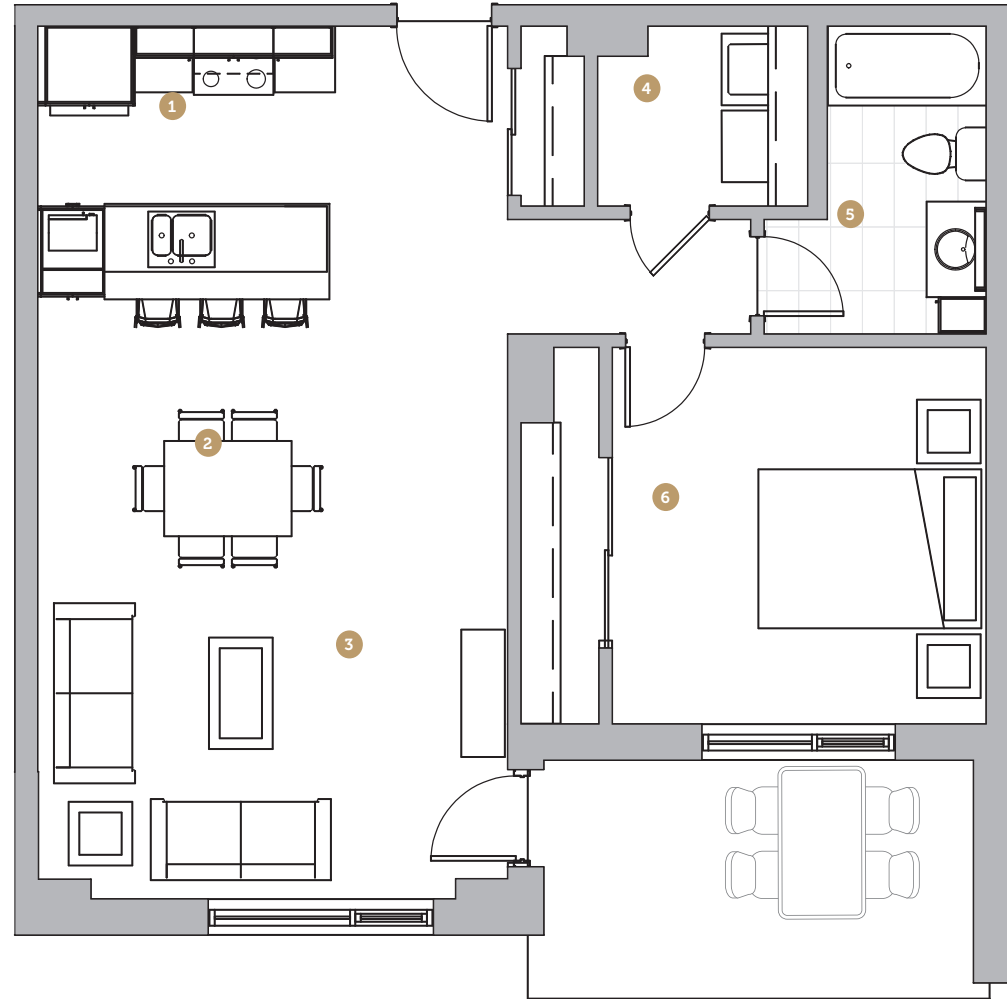
Stationnement

Rangement

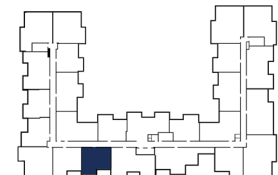
Échelle



NOTES



Avenue Saint-Charles



Rue Saint-Georges

