

LOGGIA

SAINT-LAMBERT

200, Rue Saint-Georges

217

4 1/2

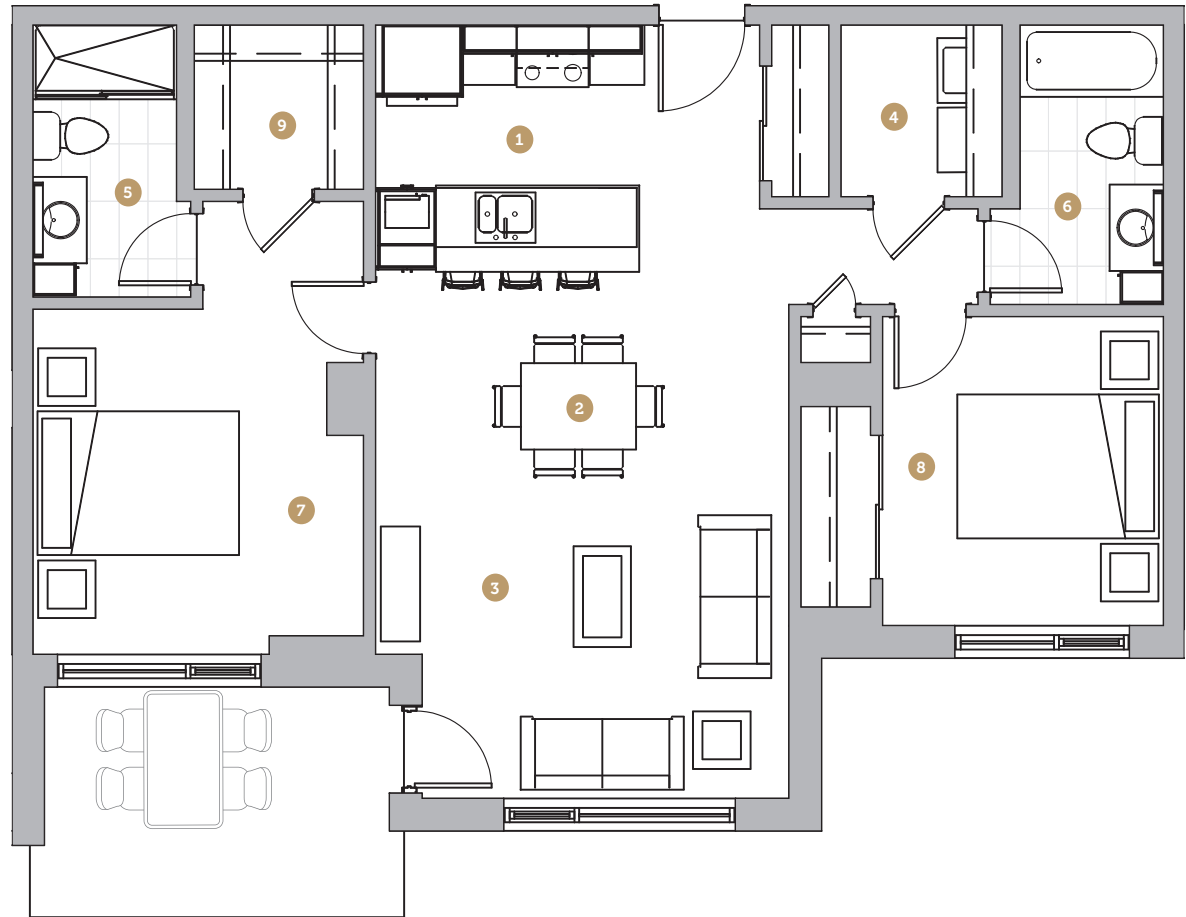
Superficie 995 pi²
Superficie balcon 99 pi²
Superficie totale 1 094 pi²

- 1 Cuisine 9' 4" x 8' 7"
- 2 Salle à manger 14' 4" x 7' 5"
- 3 Salon 14' 4" x 10' 10"
- 4 Salle de lavage 5' 7" x 6' 0"
- 5 Salle de bain 1 5' 0" x 9' 6"
- 6 Salle de bain 2 5' 0" x 9' 9"
- 7 Chambre 1 11' 6" x 12' 0"
- 8 Chambre 2 9' 9" x 10' 9"
- 9 Walk-in 5' 11" x 5' 9"

Loyer

Stationnement

Rangement

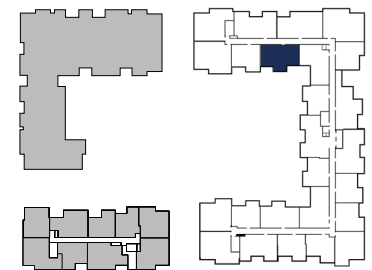


Échelle



Rue Saint-Georges

Avenue Saint-Charles



NOTES