

LOGGIA

SAINT-LAMBERT

200, Rue Saint-Georges

222

5 1/2

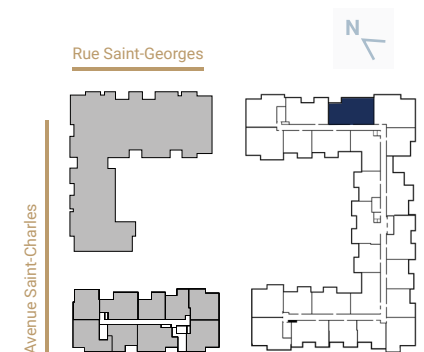
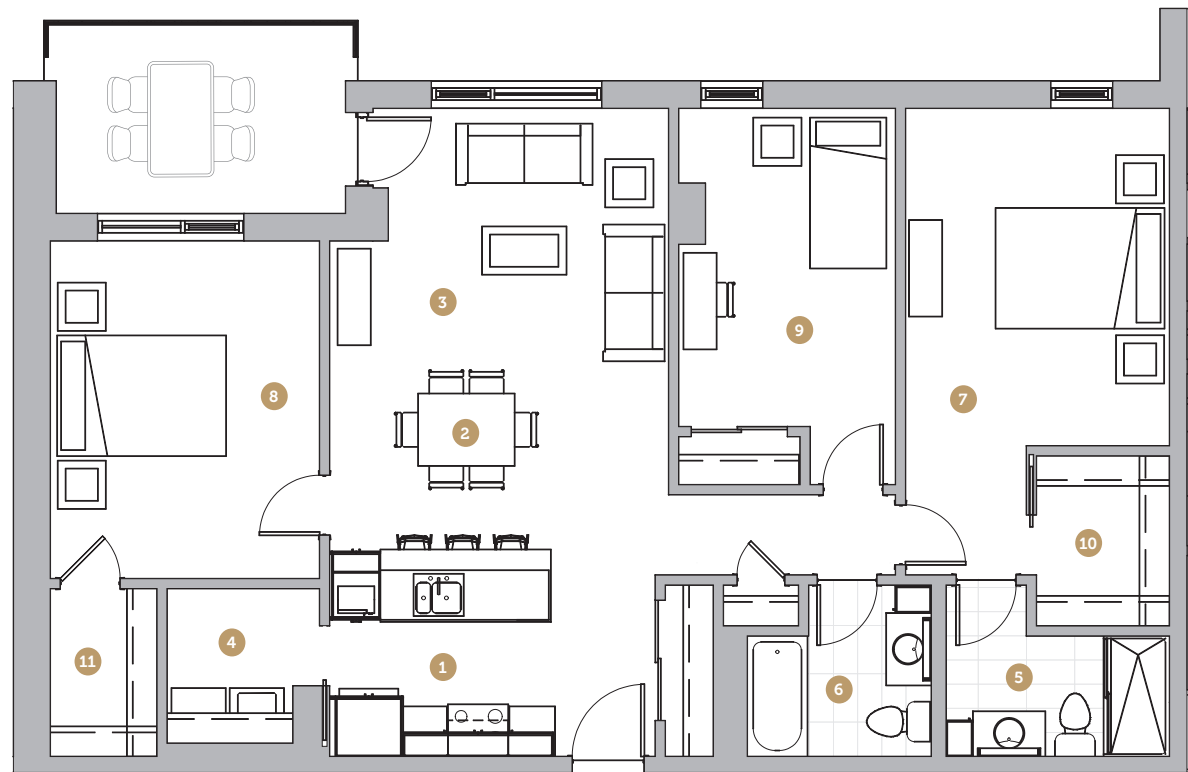
Superficie 1 273 pi²
Superficie balcon 98 pi²
Superficie totale 1 371 pi²

- 1 Cuisine 9' 4" x 8' 7"
- 2 Salle à manger 13' 11" x 7' 5"
- 3 Salon 13' 11" x 10' 10"
- 4 Salle de lavage 6' 5" x 6' 5"
- 5 Salle de bain 1 9' 3" x 5' 0"
- 6 Salle de bain 2 7' 8" x 7' 1"
- 7 Chambre 1 10' 11" x 14' 0"
- 8 Chambre 2 11' 2" x 14' 0"
- 9 Chambre 3 9' 0" x 13' 2"
- 10 Walk-in 5' 6" x 7' 1"
- 11 Walk-in 2 4' 5" x 7' 0"

Loyer

Stationnement

Rangement



NOTES