

LOGGIA

SAINT-LAMBERT

200, Rue Saint-Georges

302

3 1/2

| | |
|-------------------|---------------------|
| Superficie | 806 pi ² |
| Superficie balcon | 102 pi ² |
| Superficie totale | 908 pi ² |

- 1 Cuisine
9' 4" x 8' 7"
- 2 Salle à manger
14' 9" x 9' 1"
- 3 Salon
14' 9" x 9' 9"
- 4 Salle de lavage
6' 7" x 5' 8"
- 5 Salle de bain
5' 0" x 9' 8"
- 6 Chambre
11' 9" x 11' 10"

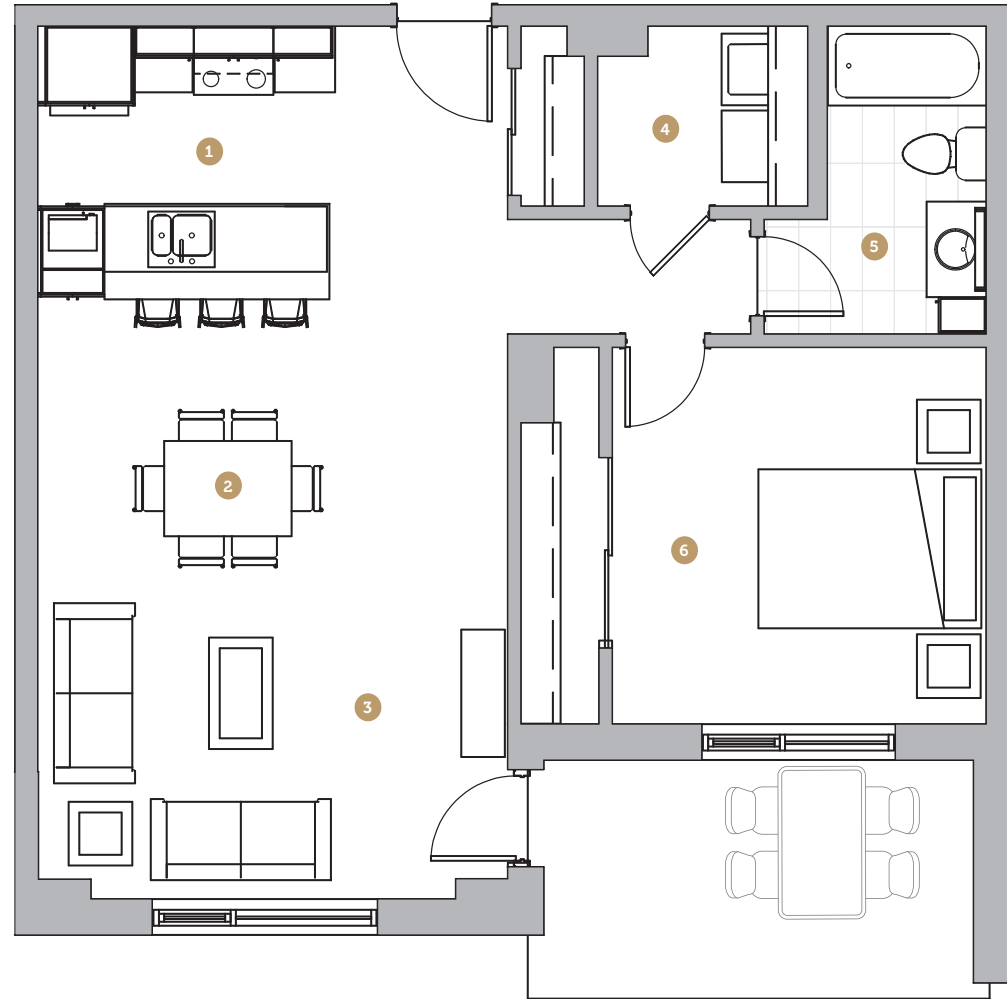
Loyer

Stationnement

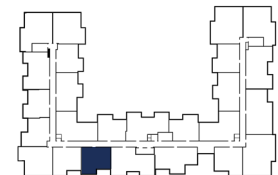
Rangement

NOTES

Échelle



Avenue Saint-Charles



Rue Saint-Georges

