

# LOGGIA

SAINT-LAMBERT

200, Rue Saint-Georges

314

4 1/2

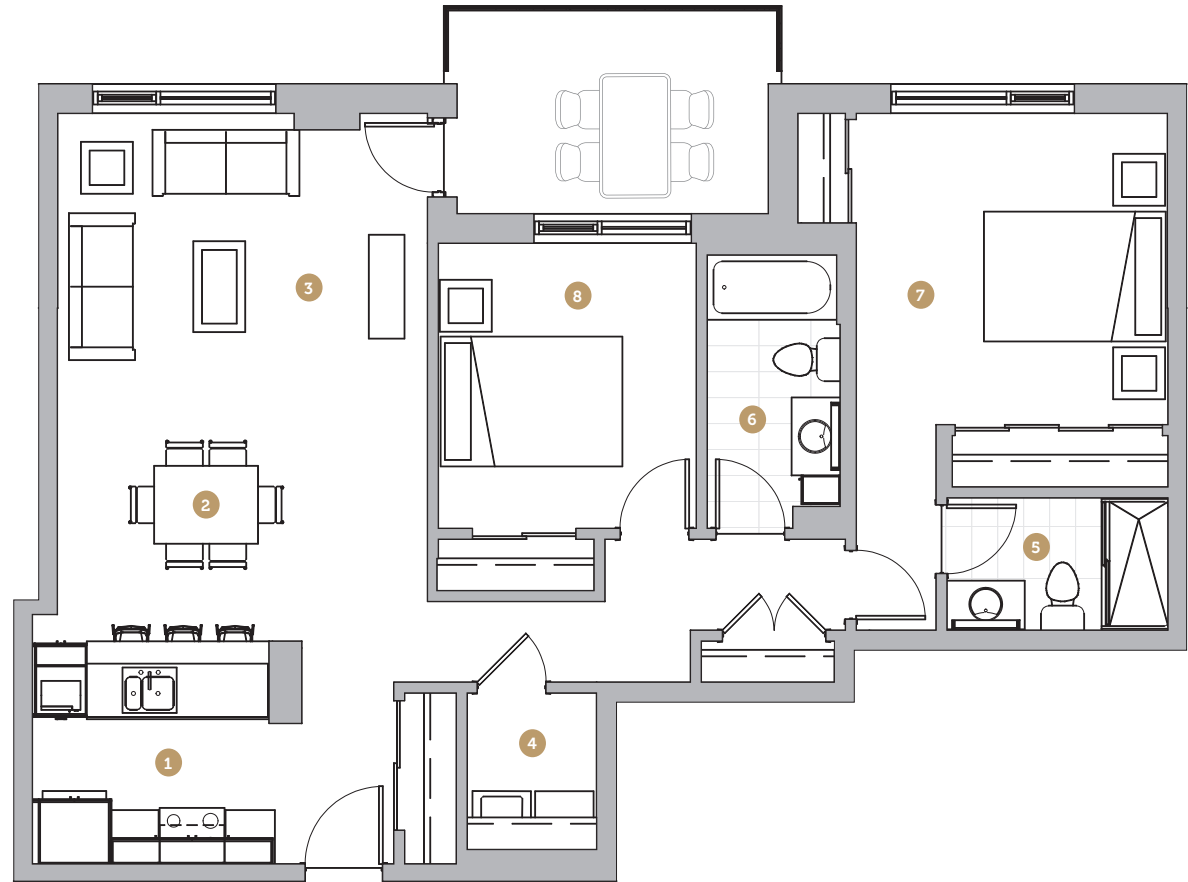
Superficie 1 107 pi<sup>2</sup>  
Superficie balcon 99 pi<sup>2</sup>  
Superficie totale 1 206 pi<sup>2</sup>

- 1 Cuisine 9' 4" x 8' 7"
- 2 Salle à manger 14' 3" x 9' 2"
- 3 Salon 14' 3" x 11' 2"
- 4 Salle de lavage 5' 0" x 6' 1"
- 5 Salle de bain 1 8' 6" x 5' 1"
- 6 Salle de bain 2 5' 2" x 10' 7"
- 7 Chambre 1 12' 0" x 12' 0"
- 8 Chambre 2 9' 11" x 11' 0"

Loyer

Stationnement

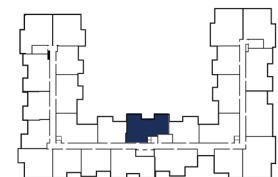
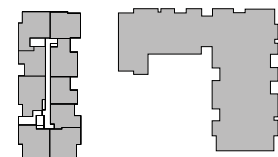
Rangement



Échelle



Avenue Saint-Charles



Rue Saint-Georges

NOTES