

LOGGIA

SAINT-LAMBERT

200, Rue Saint-Georges

321

4 1/2

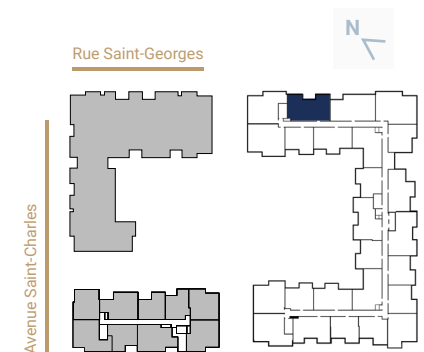
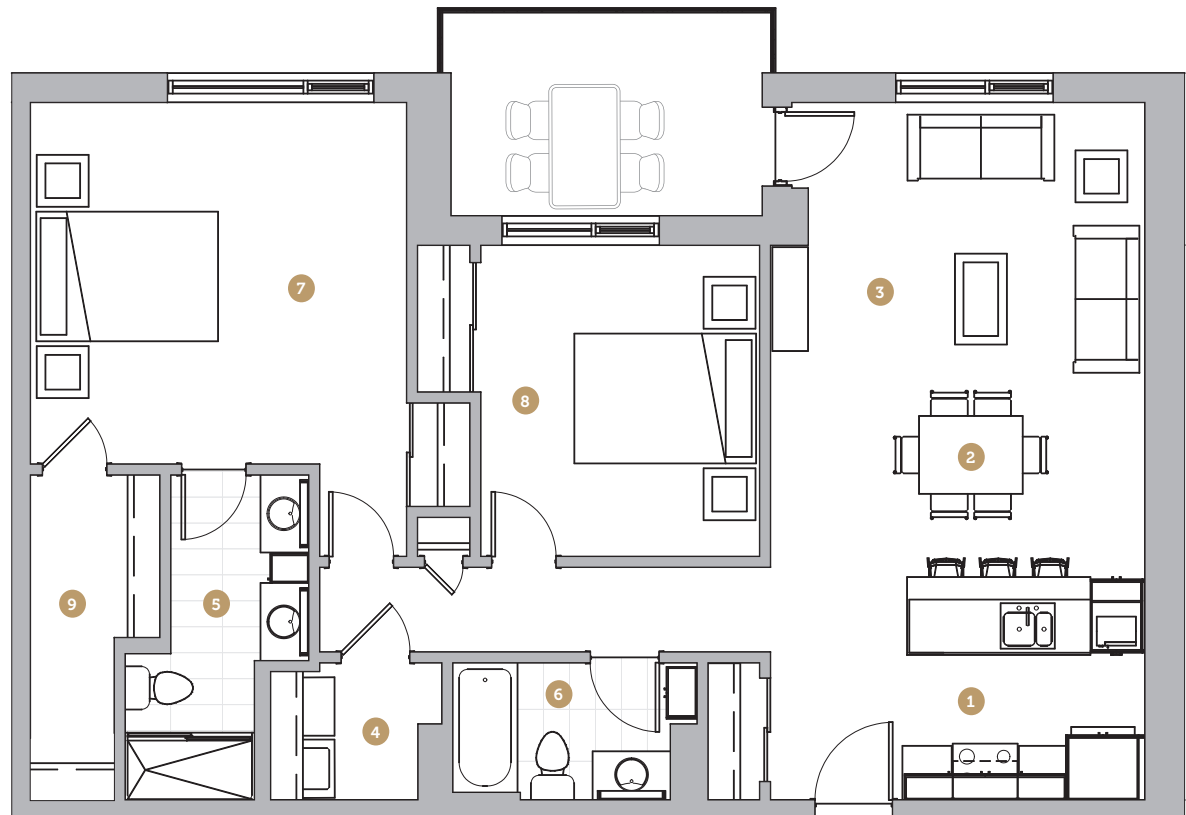
Superficie 1 180 pi²
Superficie balcon 98 pi²
Superficie totale 1 278 pi²

- 1 Cuisine 9' 4" x 8' 7"
- 2 Salle à manger 14' 5" x 7' 5"
- 3 Salon 14' 5" x 10' 10"
- 4 Salle de lavage 5' 8" x 5' 3"
- 5 Salle de bain 1 5' 4" x 12' 6"
- 6 Salle de bain 2 8' 5" x 5' 3"
- 7 Chambre 1 14' 6" x 13' 11"
- 8 Chambre 2 10' 9" x 12' 0"
- 9 Walk-in 5' 0" x 9' 11"

Loyer

Stationnement

Rangement



NOTES