

# LOGGIA

SAINT-LAMBERT

200, Rue Saint-Georges

323

5 1/2

Superficie 1 383 pi<sup>2</sup>  
Superficie balcon 122 pi<sup>2</sup>  
Superficie totale 1 505 pi<sup>2</sup>

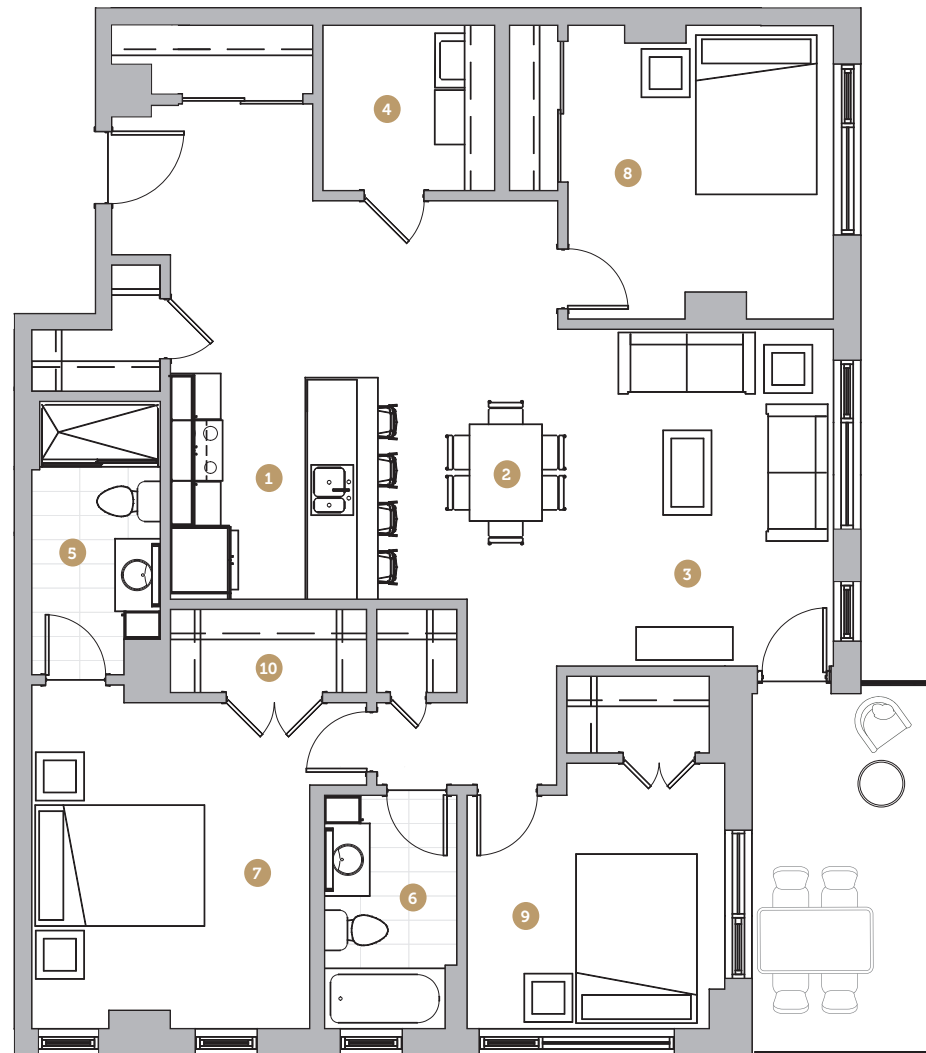
- 1 Cuisine 8' 7" x 9' 4"
- 2 Salle à manger 9' 1" x 13' 11"
- 3 Salon 9' 9" x 13' 11"
- 4 Salle de lavage 7' 1" x 6' 10"
- 5 Salle de bain 1 5' 4" x 11' 4"
- 6 Salle de bain 2 5' 6" x 9' 8"
- 7 Chambre 1 11' 6" x 13' 6"
- 8 Chambre 2 11' 0" x 12' 2"
- 9 Chambre 3 10' 8" x 11' 0"
- 10 Walk-in 8' 2" x 3' 5"

Loyer

Stationnement

Rangement

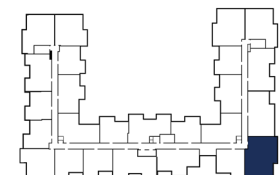
NOTES



Échelle



Avenue Saint-Charles



Rue Saint-Georges