

LOGGIA

SAINT-LAMBERT

200, Rue Saint-Georges

325

4 1/2

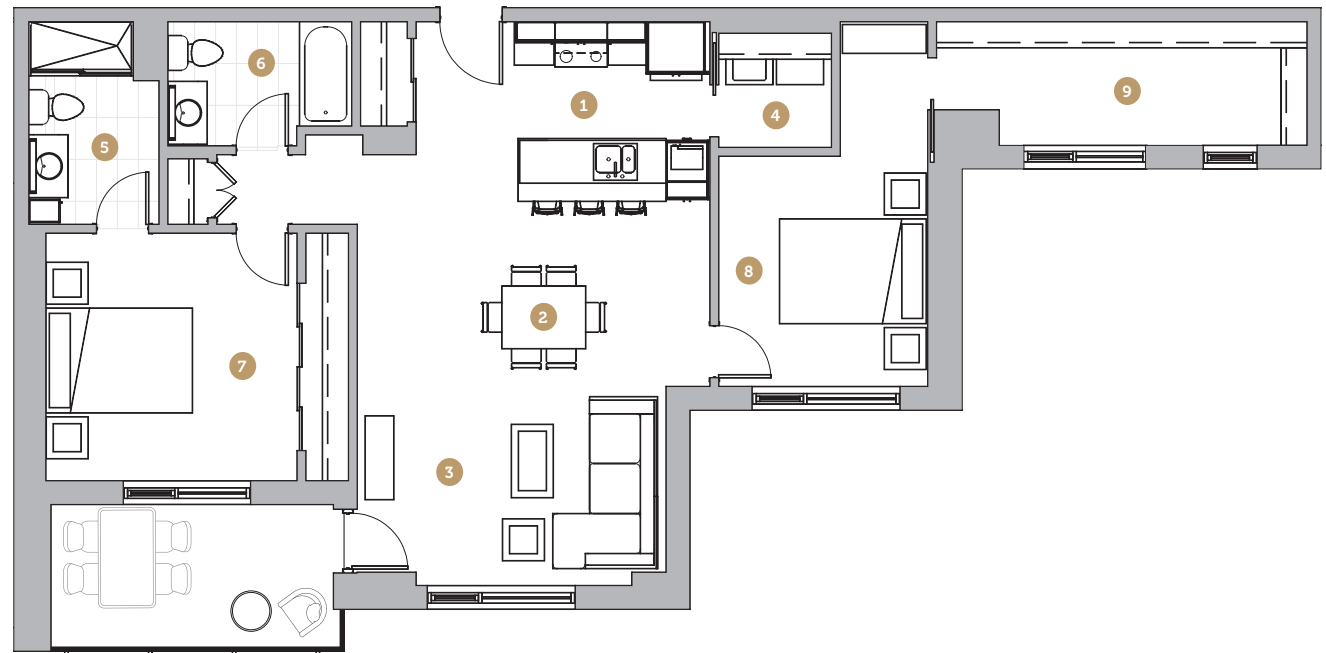
Superficie 1 200 pi²
Superficie balcon 96 pi²
Superficie totale 1 296 pi²

- 1 Cuisine 9' 4" x 8' 7"
- 2 Salle à manger 16' 10" x 8' 10"
- 3 Salon 14' 9" x 9' 6"
- 4 Salle de lavage 5' 3" x 5' 6"
- 5 Salle de bain 1 6' 3" x 9' 8"
- 6 Salle de bain 2 8' 9" x 5' 11"
- 7 Chambre 1 12' 0" x 11' 10"
- 8 Chambre 2 10' 0" x 11' 0"
- 9 Walk-in 17' 8" x 5' 11"

Loyer

Stationnement

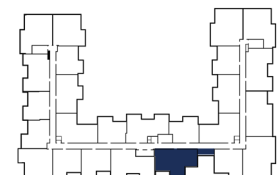
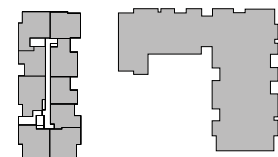
Rangement



Échelle



Avenue Saint-Charles



Rue Saint-Georges

NOTES