

LOGGIA

SAINT-LAMBERT

200, Rue Saint-Georges

403

3 1/2

Superficie 818 pi²
Superficie balcon 104 pi²
Superficie totale 922 pi²

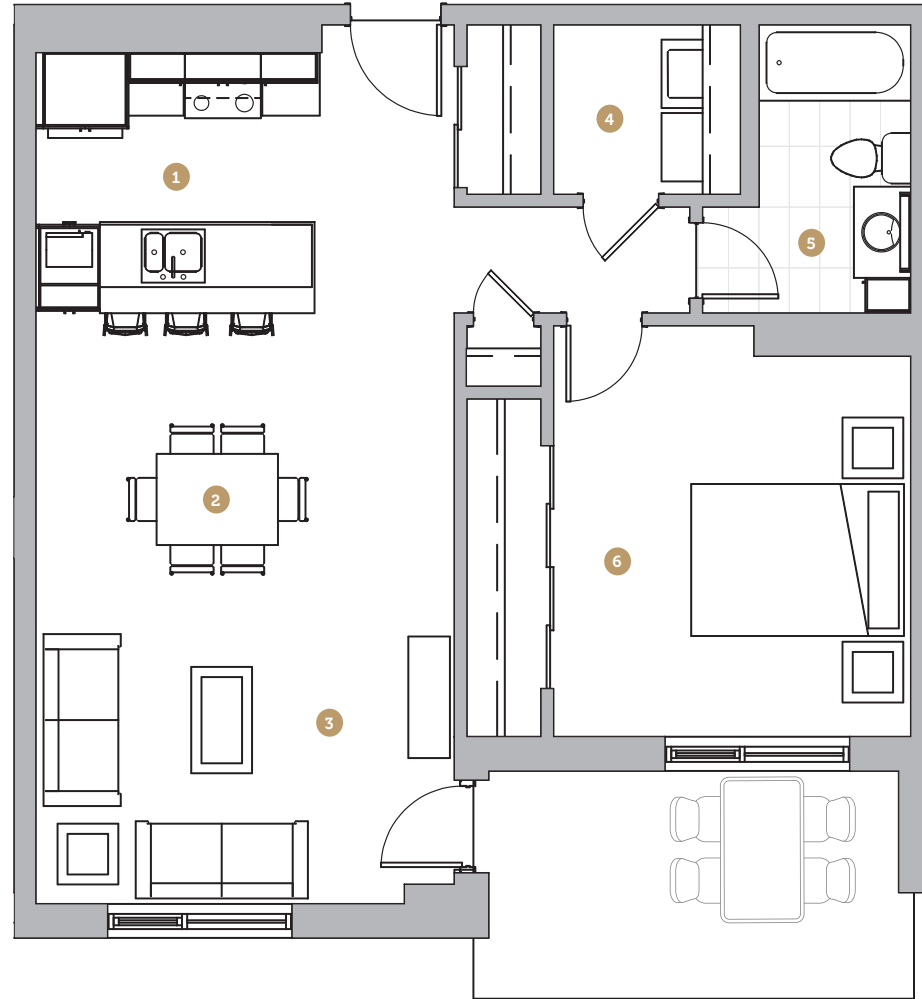
- 1 Cuisine 9' 4" x 8' 7"
- 2 Salle à manger 13' 9" x 9' 7"
- 3 Salon 13' 9" x 9' 10"
- 4 Salle de lavage 6' 2" x 5' 7"
- 5 Salle de bain 5' 0" x 9' 6"
- 6 Chambre 11' 9" x 12' 6"

Loyer

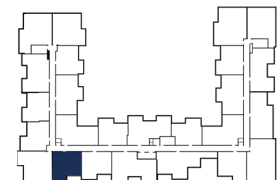
Stationnement

Rangement

NOTES



Avenue Saint-Charles



Rue Saint-Georges

