

# LOGGIA

SAINT-LAMBERT

200, Rue Saint-Georges

421

4 1/2

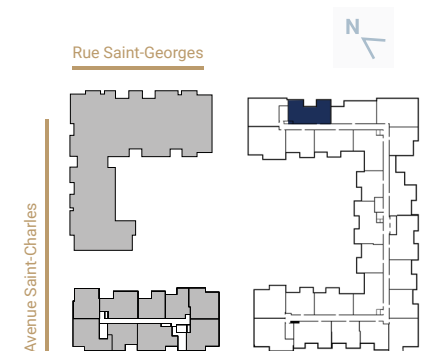
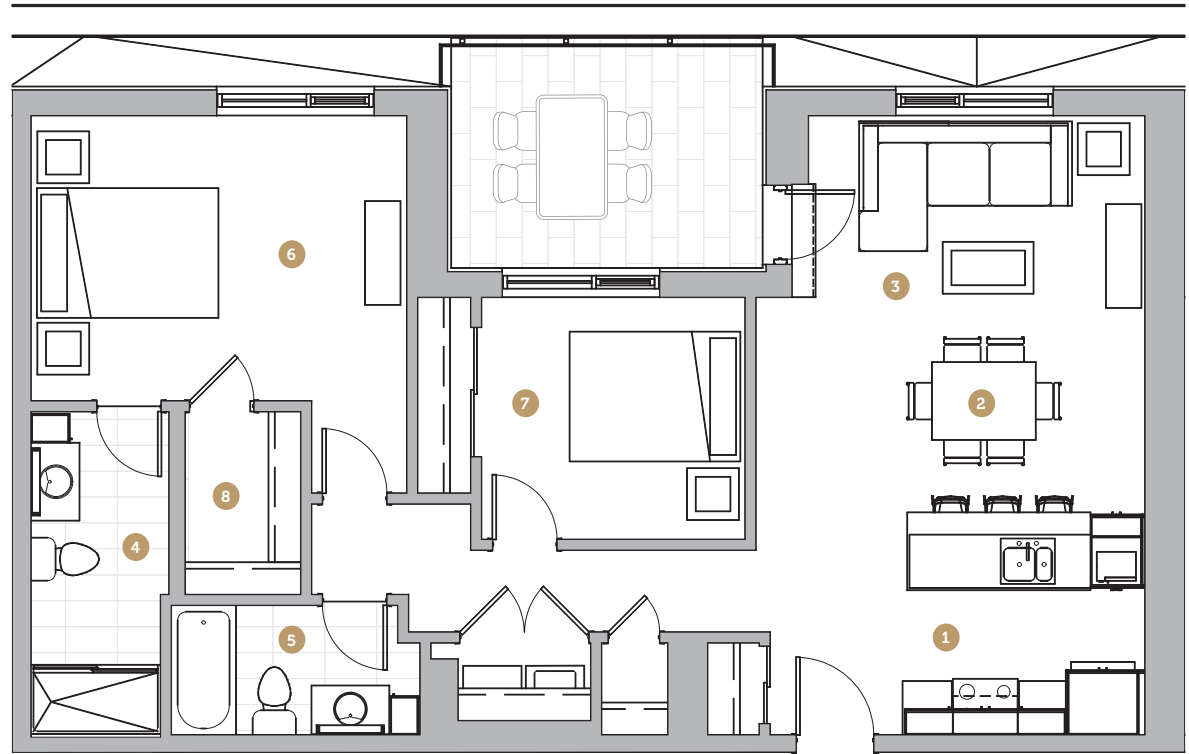
Superficie 1 039 pi<sup>2</sup>  
Superficie balcon 104 pi<sup>2</sup>  
Superficie totale 1 143 pi<sup>2</sup>

- 1 Cuisine 9' 4" x 8' 7"
- 2 Salle à manger 15' 0" x 7' 3"
- 3 Salon 13' 0" x 8' 0"
- 4 Salle de bain 1 5' 4" x 12' 2"
- 5 Salle de bain 2 9' 7" x 5' 0"
- 6 Chambre 1 14' 6" x 11' 0"
- 7 Chambre 2 10' 2" x 9' 4"
- 8 Walk-in 4' 6" x 7' 1"

Loyer

Stationnement

Rangement



NOTES