

LOGGIA

SAINT-LAMBERT

200, Rue Saint-Georges

501

5 1/2

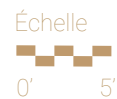
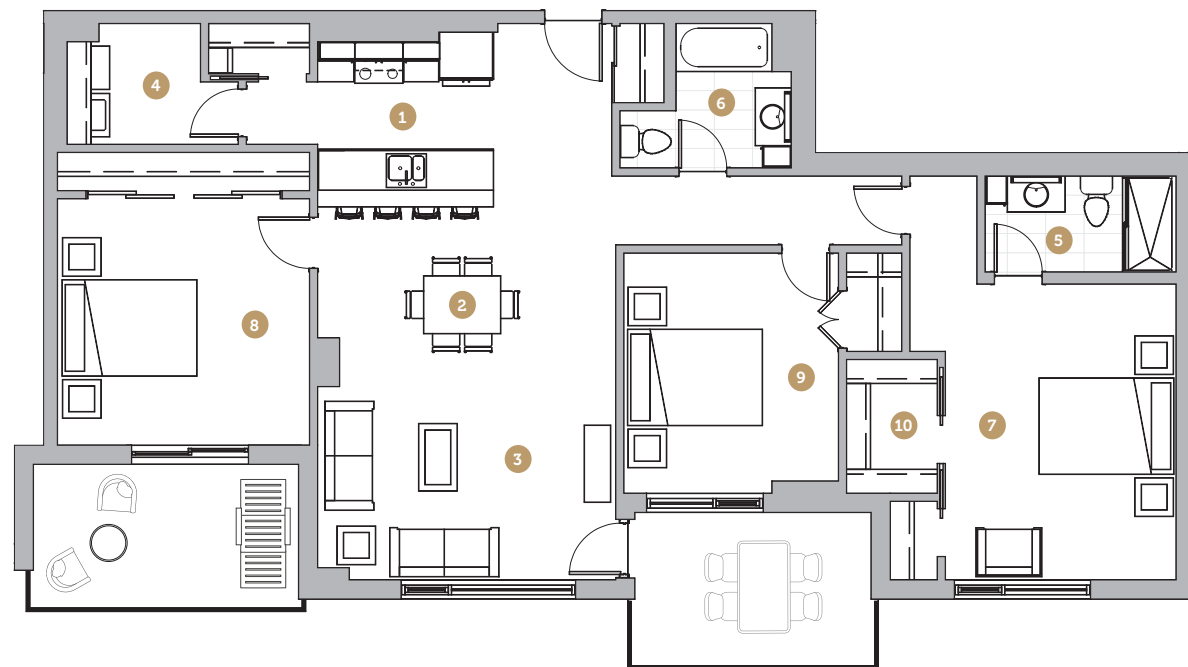
Superficie 1 495 pi²
Superficie balcon 103 pi² +
99 pi²
Superficie totale 1 697 pi²

- 1 Cuisine 9' 2" x 9' 1"
- 2 Salle à manger 15' 6" x 8' 10"
- 3 Salon 15' 6" x 10' 6"
- 4 Salle de lavage 6' 11" x 6' 4"
- 5 Salle de bain 1 9' 11" x 5' 0"
- 6 Salle de bain 2 8' 11" x 7' 6"
- 7 Chambre 1 12' 0" x 15' 5"
- 8 Chambre 2 13' 1" x 12' 10"
- 9 Chambre 3 11' 2" x 12' 6"
- 10 Walk-in 4' 9" x 7' 0"

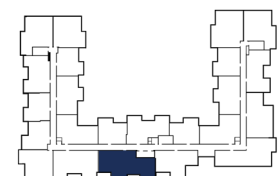
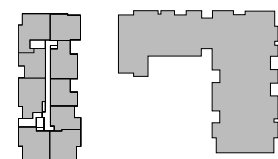
Loyer

Stationnement

Rangement



Avenue Saint-Charles



NOTES