

LOGGIA

SAINT-LAMBERT

200, Rue Saint-Georges

512

4 1/2

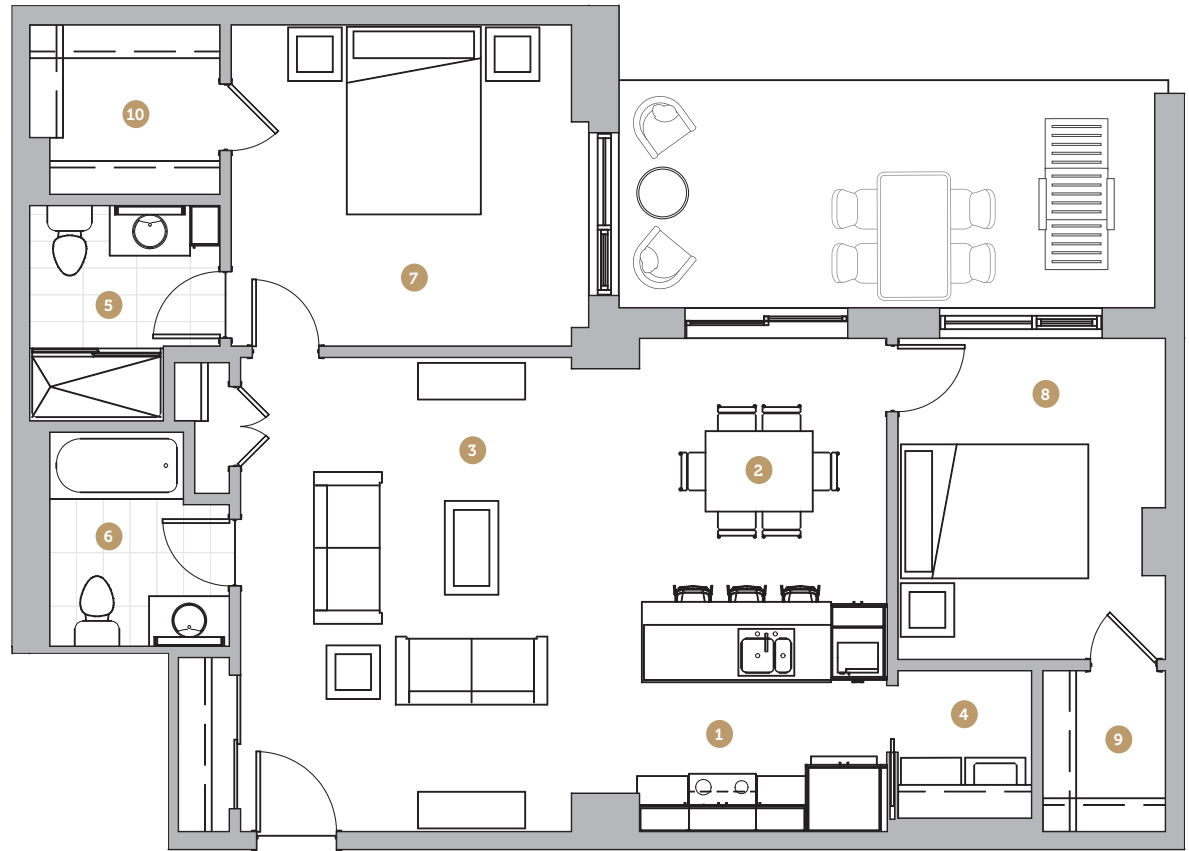
Superficie 1 059 pi²
Superficie balcon 170 pi²
Superficie totale 1 229 pi²

- | | |
|-------------------------------------|------------------------------------|
| 1 Cuisine
9' 3" x 8' 7" | 6 Salle de bain 2
6' 9" x 8' 0" |
| 2 Salle à manger
10' 5" x 9' 10" | 7 Chambre 1
13' 4" x 12' 0" |
| 3 Salon
13' 9" x 13' 3" | 8 Chambre 2
10' 0" x 12' 0" |
| 4 Salle de lavage
5' 0" x 5' 6" | 9 Walk-in
4' 7" x 6' 0" |
| 5 Salle de bain 1
7' 1" x 8' 1" | 10 Walk-in
7' 1" x 6' 4" |

Loyer

Stationnement

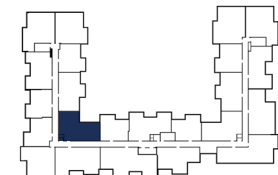
Rangement



Échelle



Avenue Saint-Charles



Rue Saint-Georges

NOTES