

# LOGGIA

SAINT-LAMBERT

200, Rue Saint-Georges

622

5 1/2

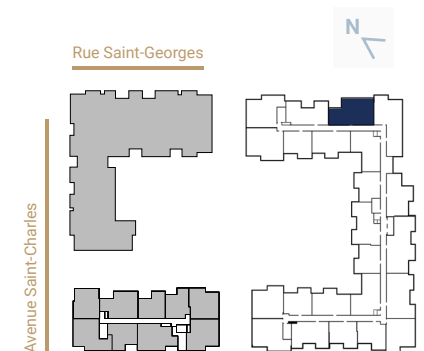
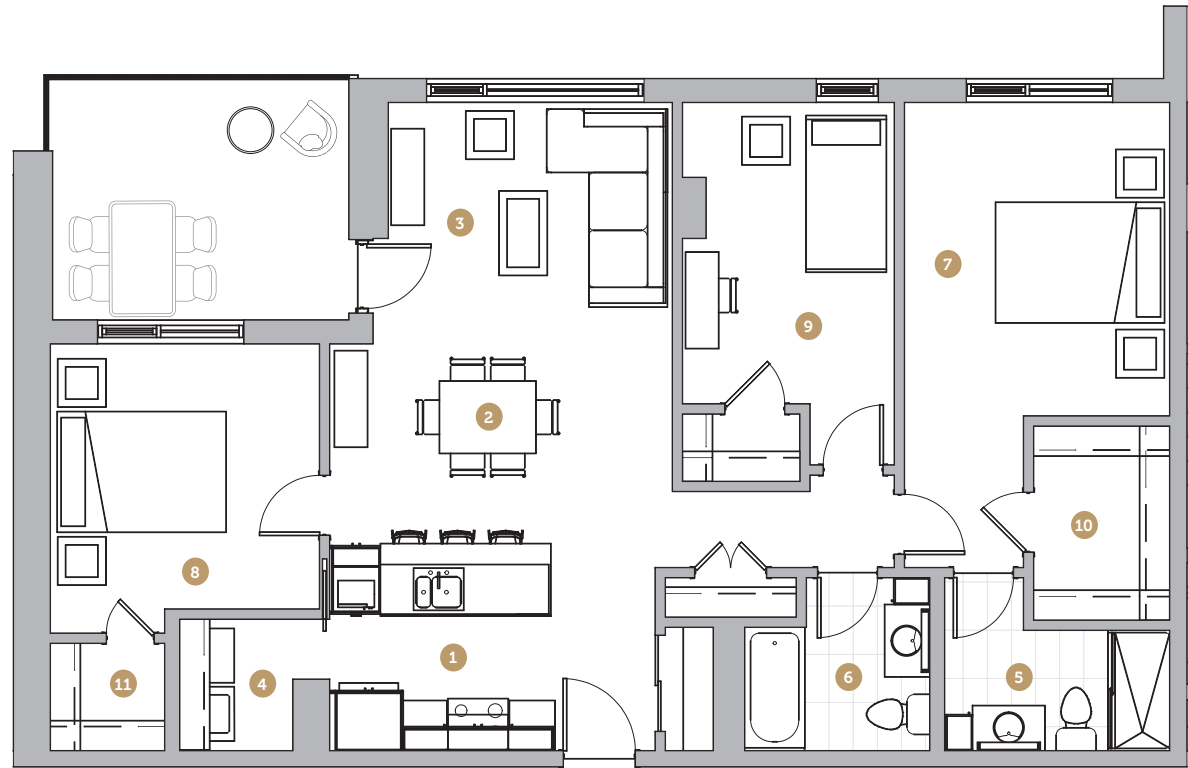
Superficie 1 213 pi<sup>2</sup>  
Superficie balcon 126 pi<sup>2</sup>  
Superficie totale 1 339 pi<sup>2</sup>

- 1 Cuisine 9' 4" x 8' 7"
- 2 Salle à manger 14' 3" x 8' 8"
- 3 Salon 11' 9" x 9' 7"
- 4 Salle de lavage 4' 9" x 5' 6"
- 5 Salle de bain 1 9' 4" x 5' 0"
- 6 Salle de bain 2 7' 8" x 7' 2"
- 7 Chambre 1 11' 0" x 13' 0"
- 8 Chambre 2 11' 2" x 11' 0"
- 9 Chambre 3 8' 10" x 12' 6"
- 10 Walk-in 5' 8" x 8' 1"
- 11 Walk-in 2 4' 9" x 4' 6"

Loyer

Stationnement

Rangement



NOTES