

# LOGGIA

SAINT-LAMBERT

200, Rue Saint-Georges

623

5 1/2

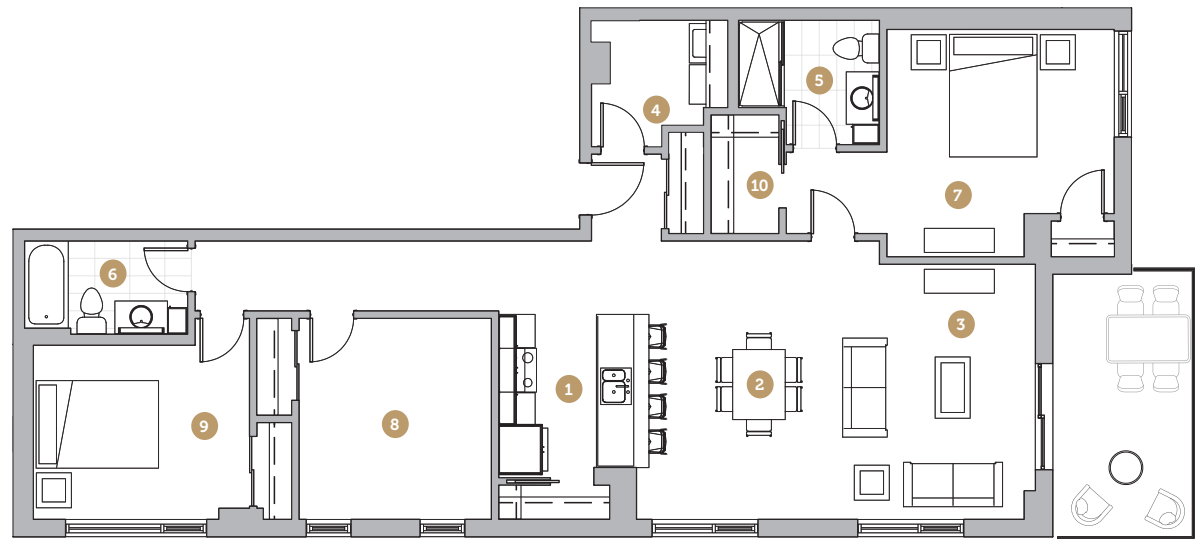
Superficie 1 430 pi<sup>2</sup>  
Superficie balcon 125 pi<sup>2</sup>  
Superficie totale 1 555 pi<sup>2</sup>

- 1 Cuisine 8' 7" x 9' 4"
- 2 Salle à manger 9' 8" x 15' 11"
- 3 Salon 12' 5" x 14' 7"
- 4 Salle de lavage 5' 0" x 7' 3"
- 5 Salle de bain 1 8' 1" x 7' 1"
- 6 Salle de bain 2 9' 4" x 5' 4"
- 7 Chambre 1 13' 0" x 13' 0"
- 8 Chambre 2 11' 0" x 11' 6"
- 9 Chambre 3 12' 4" x 10' 0"
- 10 Walk-in 3' 11" x 6' 9"

Loyer

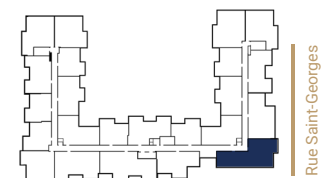
Stationnement

Rangement



Échelle  
0' 5'

Avenue Saint-Charles



NOTES